

Atlanta Powertrain Inc.

Main Phone #: 404-361-2869

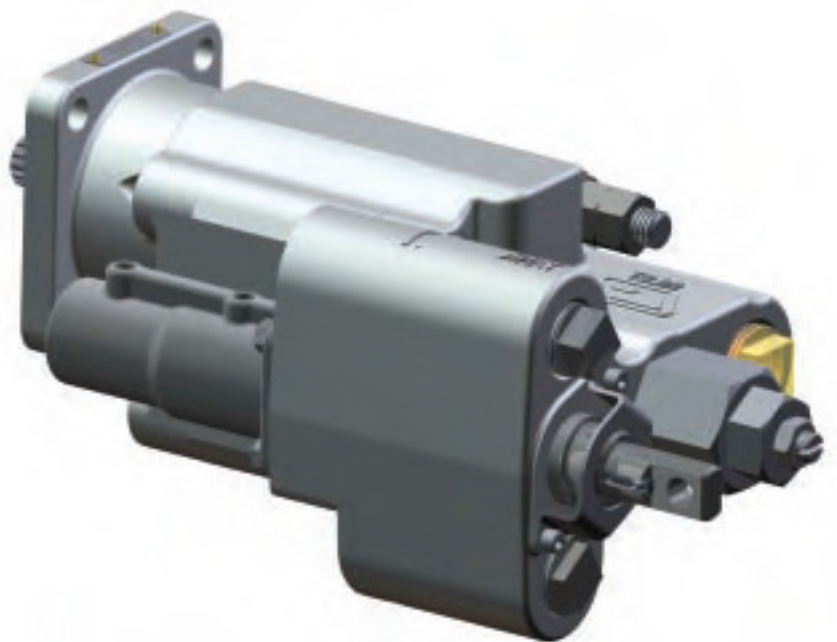
Field Representatives

Dennis Hartley: 205-577-2605

dhartley@atlantapowertrain.com

Jason Sasser: 205-492-8006

jsasser@atlantapowertrain.com



Dump Pumps

C101/102 and G101/102

Combination Gear Pump and Valve



Engineering **Your** Success

Combination Pump and Valves

C101/102 and G101/102 Series

Pump / Valve Product

C101/102

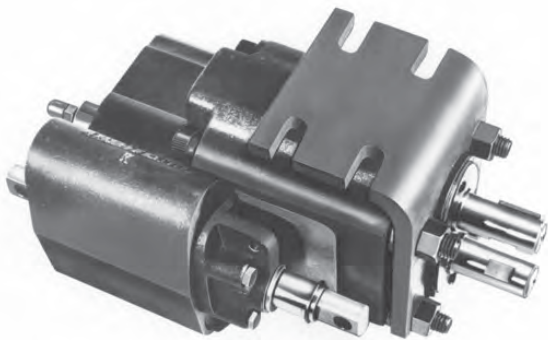
- 33 gpm @ 1200 rpm
- 49 gpm @ 1800 rpm
- Pressures to 2500 psi
- Speeds to 2400 rpm
- 2 or 3 line installations
- Choice of mounting
- Air remote operators available
- Relief valve protects the driver, pump, & cylinder

G101/102

- 20 gpm @ 1200 rpm
- 30 gpm @ 1800 rpm
- Pressures to 2500 psi
- Speeds to 2400 rpm
- 2 or 3 line installations
- Choice of Mountings
- Air remote operators available
- Relief valve protects the driver, pump, & cylinder
- Will Direct Mount to PTO on Allison Automatic Transmission

Mount Bracket Part Number

- C101 Bracket 314-010-0005
- C102 Bracket 391-183-2323



Safe Reliable Service

Our relief valve protects the driver, pump, and cylinder in all positions: raise, hold, neutral, and lower. The C and G Series Dump Pumps provide the most reliable, trouble-free controls for dump trucks and trailer applications in our industry.

We Have The Pump Your Dump Truck Needs

Our dump body pump/valve products deliver the right flow range for most applications at 1800 rpm/2000 psi. Models with two shafts (C101/G101) are connected to the PTO by a drive shaft operating in either direction of rotation. Single shaft units (C102/G102) are directly mounted to the PTO and must be ordered with the correct directional rotation.

Product Features

- Bronze pressure balanced thrust plates
- High pressure shaft seals with spiral retainer
- High grade fasteners
- Hard chrome spool with low leakage
- Exposed hardware is Zinc coated
- Gears ground for highest efficiency and lowest noise
- FEA Analysis on Castings
- Highest quality relief valve
- Relief Valve Screen to keep major contaminants out of the relief valve chamber

Truck Pump Program

C101/102 and G101/102 Series

Most Popular Numbers

Parker #	Description	Rot.	Gear	CID
C101/102				
3149310226T	C101D-2.5 (Remote Mount)	BI	2.5"	6.38
3149310902T	C101D-2.5-AS (Remote Mount w/Air Shift Installed)	BI	2.5"	6.38
3149325229T	C102D-2.5-1 (Direct Mount)	CCW	2.5"	6.38
3149325227T	C102D-2.5-1-AS (Direct Mount w/Air Shift Installed)	CCW	2.5"	6.38
3149325234T	C102D-2.5 (Direct Mount)	CW	2.5"	6.38
3149325018T	C102D-2.5 (Direct Mount w/Air Shift Installed)	CW	2.5"	6.38
G101/102				
3089310047T	G101-1-2.0 (Remote Mount)	BI	2.0"	3.94
3089310416T	G102-1-2.0-R-4S (Direct Mount)	CW	2.0"	3.94
3089310903T	G102-1-2.0-R-4S-AS (Direct Mount w/Air Shift Installed)	CW	2.0"	3.94
3089310418T	G102-1-2.0-L-4S (Direct Mount)	CCW	2.0"	3.94
3089310905T	G102-1-2.0-L-4S-AS (Direct Mount w/Air Shift Installed)	CCW	2.0"	3.94
Note:	All dump pumps have 3-line sleeve included			
	All relief valves are set to 2000 psi			
Accessories For Reference Only				
Parker #	Description			
3149414006	ASK-6 (Air Shift Cylinder with Hoses and Fittings C102)			
3149414017	ASK-17 (Air Shift Cylinder less Hoses and Fittings C102)			
3140100005	C101 Remote Mount Bracket			
3141832323	C102 Direct Mount Bracket			
3913283052	3rd Line Sleeve			
3089414016	ASK-16 (Air Shift Cylinder with Hoses and Fittings G102)			
3089414049	ASK-49 (Air Shift Cylinder less Hoses and Fittings G102)			
3149414055	ASK-17 (Air Shift Cylinder Less Hoses With Push to Connect Fittings C102)			
3089414070	ASK-49 (Air Shift Cylinder Less Hoses With Push to Connect fittings G102)			

Parker
Value Added Service Center Austin,
TX. 78754
phone: 877-482-4899
fax: 512-926-9333
E-mail wetlinekits@parker.com
Web: www.phtruck.com/wetlinekits

