

PGP051 Series

New 2/4 Bolt Mounting Flange
High Pressure Pumps Up to 3000 PSI

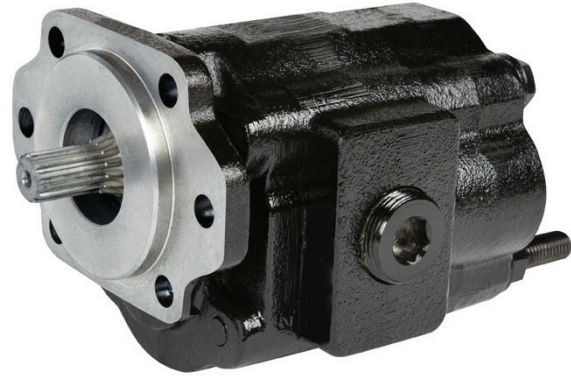
Atlanta Powertrain Inc.

Main Phone # 404-361-2869

Field Representatives

Dennis Hartley 205-577-2605 dhartley@atlantapowertrain.com

Jasson Sasser 205-492-8006 jsasser@atlantapowertrain.com

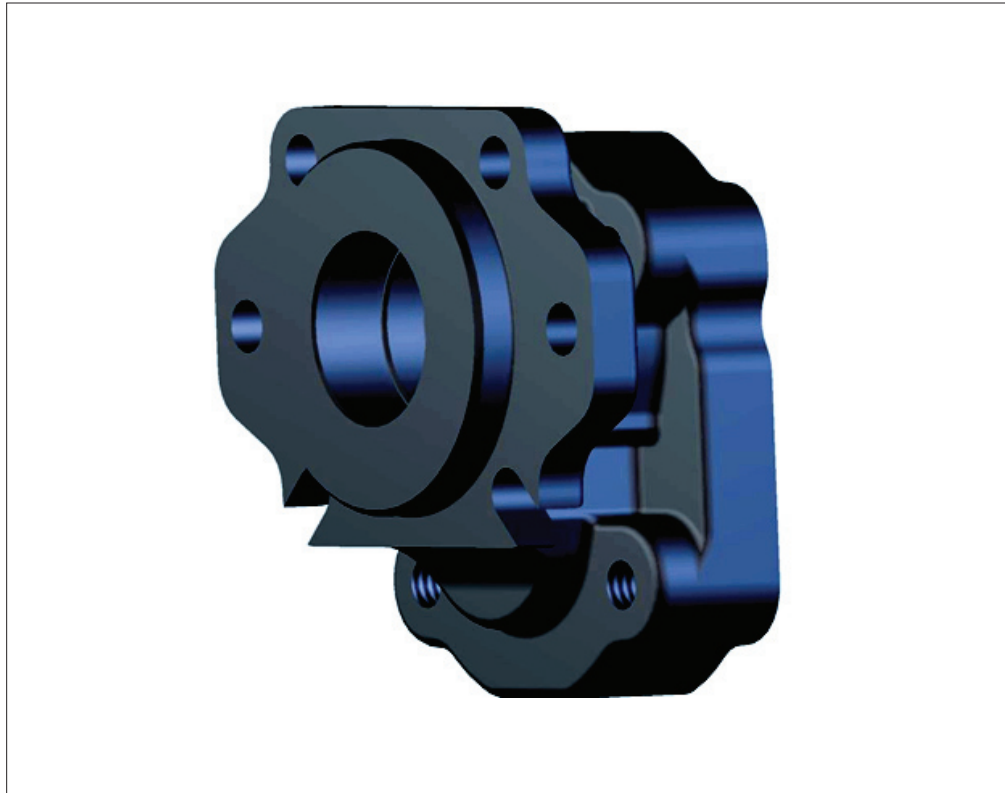


Customer Value Proposition:

The short shaft end cover code 65 with a 7/8" 13 tooth spline was designed to give added clearance between the frame rails. The shorter shaft length provided the same high level of flow to the hydraulic system as its 4 bolt counterpart.

The short shaft end cover prior to this new flange required the use of two different length of fasteners. The new innovative flange will accept the same size fastener in addition to making the bolt installation extremely easy.

The new 2/4 Bolt P51 is available in 1 1/2" to 2 1/2" gear sets. All 2/4 bolt P51's come standard with the side and rear ports. The 2/4 Bolt P51 can be directly mounted to the PTO and braced to the transmission.



Contact Information:

Parker

Value Added Service Center

Austin, Tx. 78754

phone: 877-482-4899

fax: 512-926-9333

www.phtruck.com

Product Features

PGP 051 2/4 Bolt:

- Easy Attachment
- Same Size Bolts
- 2/4 Bolt SAE B Mounting
- Side and Rear Ports
- Flows to 47 GPM's @ 1800 rpm
- Bi Rotational
- 1 1/2" NPT Ports
- Extended Studs Standard
- Speeds to 2400 rpm
- Pressures to 3000 psi



Engineering **Your** Success

Technical Data PGP 051 Series

Speed RPM	Gear Width Output (GPM/LPM)				
	1 1/2"	1 3/4"	2"	2 1/4"	2 1/2"
900	13	15	17.5	20	22
	49	57	66	75.5	83.5
1200	18	21	24	27	30
	68	79.5	91	102	114
1500	23	27	31	35	39
	87	102	117	132	148
1800	27.5	32.5	37.5	42	47
	104	123	142	159	178
2100	32.5	38.5	44	49.5	55
	123	146	167	187	208
2400	37	44	51	57	63.5
	140	167	193	216	240

PL Factor
Pressure X Total Gear Width
Cannot Exceed the Chart Below

Shaft Style	PL Chart	
	Integral	2 Piece
SAE B Spline	6,100	6,100
SAE BB Spline	9,400	-
SAE BB Key	5,600	5,600
SAE C Spline	12,900	8,500
SAE C Key	10,900	8,500
Connecting Shaft	-	8,500

**2/4 Bolt SAE B 7/8" 13 Tooth
Bi Rotation NPT**

Part Number	Rear Port	Side Port	Gear Set
3139610665T	1 1/2"	1 1/4"	1 1/2"
3139610664T	1 1/2"	1 1/4"	1 3/4"
3139610663T	1 1/2"	1 1/4"	2"
3139610659T	1 1/2"	1 1/2"	2 1/4"
3139610658T	1 1/2"	1 1/2"	2 1/2"

**2/4 Bolt SAE B 7/8" 13 Tooth
Bi Rotation O-Ring**

Part Number	Rear Port	Side Port	Gear Set
3139610769T	1 1/4"	1 1/4"	1 3/4"
3139610768T	1 1/4"	1 1/4"	2"
3139610767T	1 1/4"	1 1/4"	2 1/4"
3139610766T	1 1/4"	1 1/2"	2 1/2"

Parker
Value Added Service Center
 Austin, Tx 78754
 Phone: 877-482-4899
 Fax: 512-926-9333
 E-mail: wetlinekits@parker.com
 Web: www.phtruck.com/wetlinekits



Engineering Your Success